



Fermenatortm

**** Optional Tri-Clamp Blow-off Kit ****

Operation, Assembly, Maintenance Manual **Fits all Blichmann Engineering conicals**

Congratulations on your purchase, and thank you for selecting the FermenatorTM stainless conical fermentor from Blichmann Engineering. We are confident that it will provide you years of service and many gallons of outstanding beer and wine. This manual will familiarize you with the use, assembly, and the sanitation procedures for the product.

****** PLEASE READ THOROUGHLY PRIOR TO USE FOR IMPORTANT SAFETY INFORMATION ******

Unpacking:

Please ensure that you have the following items packaged with your blow-off kit. Note that some items may have been preassembled for protection in shipment:

- 2 Gasket – 1" tri clamp, EPDM
- 2 1" tri-clamp clamps with wing nuts
- 1 1" tri-clamp 90 degree stainless steel elbow
- 1 Bulkhead nut (1" male thread X 1" tri clamp)
- 1 Bulkhead fitting (1" female thread X 1" tri clamp)
- 1 O-ring – bulkhead fitting (large)
- 1 Hose barb fitting – 1" tri clamp X 1" hose
- 1 Hose barb fitting – 1" tri clamp X ½" hose
- 1 Tool – sanitary bulkhead (small washer with 3 bent tabs)
- 1 P-clip with nylock nut, bolt, 2 washers
- 1 Rubber stopper

IMPORTANT !!

Warning: Sections labeled “Warning” can lead to serious injury or death if not followed. Please read these thoroughly and understand them completely before use. If you do not understand them or have any questions, contact your retailer or Blichmann Engineering (www.BlichmannEngineering.com) before use.

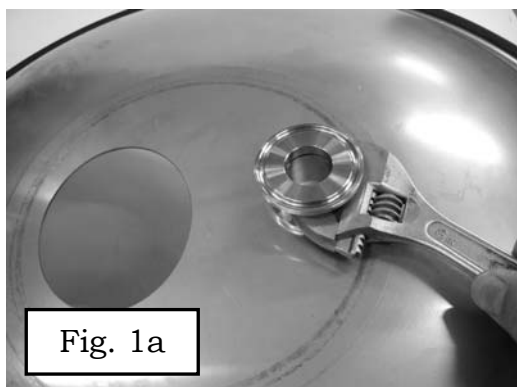
Caution: Sections labeled “Caution” can lead to equipment damage or unsatisfactory performance of the equipment. Please read these sections thoroughly. If you have any questions, contact your retailer or Blichmann Engineering (www.BlichmannEngineering.com) before use.

Assembly:

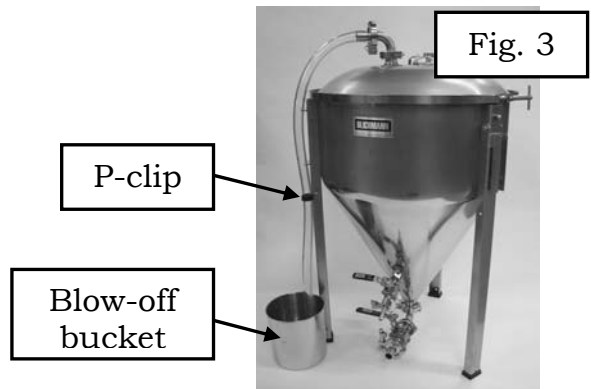
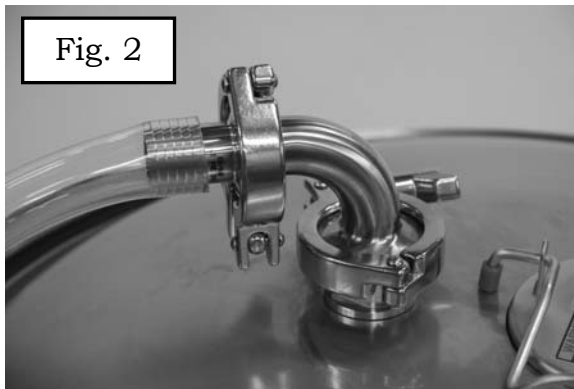
Threaded fittings

It is not necessary or recommended to use thread sealing tape on the threaded fittings of the tri-clamp bulkhead fitting. The sealing is accomplished by the o-ring, not the threaded joint.

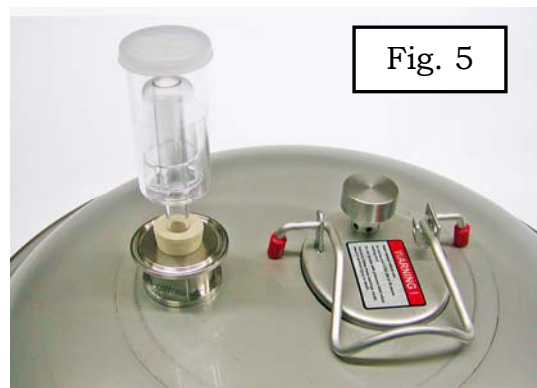
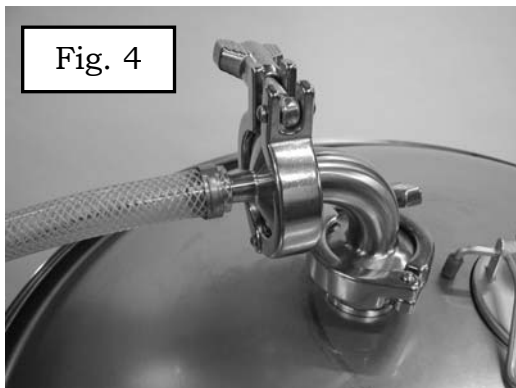
To install the tri-clamp bulkhead fittings first sanitize the surface of the hole in the lid with sanitizer using a cotton ball or clean cloth. Sanitize the fittings and o-ring, and install the o-ring in the groove of the bulkhead fitting. Please the bulkhead nut through the hole in the tank and thread the bulkhead fitting onto it hand tight. If you feel any resistance to movement, or dragging of the threads STOP IMMEDIATELY. Cross threaded fittings are NOT covered under warranty and will not come apart. Leaving the fittings wet with sanitizer will aid in assembly and act as a lubricant. Use an open end wrench on one side (see fig 1a) and the special tool and ratchet wrench on the other side as shown in fig 1b to tighten the fitting.



Install the elbow and barb fittings using the clamps and gaskets as shown in Fig 2. Install the P-clip and hose (1" ID hose not included) as shown in Fig 3 and place it in a bucket (not included) filled ½ full of sanitizer. Ensure that the hose is immersed at all times. After primary fermentation is past high krausen and bubbling out of your blow-off hose has stopped you can remove the blow-off hose and elbow and replace it with the stopper and airlock as shown in Fig. 5 for the remainder of the fermentation.



In lieu of using a barbed elbow and a rubber stopper included with your Fermentor™, the optional blow-off assembly includes a ½” barbed adapter (Fig 4) so you can make up a CO₂ hose (not included). Follow the pressurizing instructions as directed in the “Racking finished beer – CO₂ pressure pumping” section in the manual supplied with your conical.



Warning:

Do NOT use this product on any other manufacturers equipment! Blichmann Engineering products are designed with a pressure relief system to prevent dangerous over-pressurizations.

DO NOT UNDER ANY CIRCUMSTANCES USE THE ½” BARB X 1” TRI CLAMP CONNECTOR DURING FERMENTATION AS A BLOW-OFF HOSE. Dangerous over-pressurization could occur from plugging of this hose. The 1” barb allows adequate area for blow-off material (hops etc) to pass without clogging.

After Use Cleaning and Storage:

After use, rinse with hot water and soak the fittings and seals in hot PBW solution or boil as in the sanitizing procedure. Thoroughly dry all seals and o-rings and store them in a plastic bag and place inside the tank for the next use. Be sure to remove all the o-rings from the fittings to prevent from taking a “set

Note: it is not necessary to re-sanitize the fittings prior to the next use if you have stored them in a bag. Proceed directly to the assembly stage as you will be sanitizing them after assembly.

Contact your local Fermentor Distributor for replacement parts and lid seals.

BLICHMANN ENGINEERING PRODUCT WARRANTY

A. Limited Warranty

1. Blichmann Engineering warrants to the original purchaser that this product will be free from manufacturing defects in material and workmanship for a period of one (1) year from the date of purchase by the customer. Proof of purchase is required. Blichmann Engineering's obligation to repair or replace defective materials or workmanship is the sole obligation of Blichmann Engineering under this limited warranty.
2. The limited warranty covers only those defects that arise as a result of normal use of the product and does not cover any other problems, including, but not limited to, those that arise as a result of:
 - a. *Improper maintenance or modification;*
 - b. *Damage due to incorrect voltage or improper wiring by customer;*
 - c. *Operation outside of the product's specifications;*
 - d. *Carelessness or neglect to operate the product in accordance with instructions provided with the product;*
 - e. *Damaging the tamper label on the product;*
 - f. *Damage by over-tightening the fasteners;*
 - g. *Failure to follow cleaning and / or maintenance procedures; or*
 - h. *Exceeding published operational temperatures.*
3. Blichmann Engineering reserves the right to request delivery of the defective component for inspection before processing the warranty claim. If Blichmann Engineering receives, during the applicable warranty period, notice of a defect in any component that is covered by the warranty, Blichmann Engineering shall either repair or replace the defective component with a new or rebuilt component at Blichmann Engineering's option.
4. Blichmann Engineering must be notified within seven (7) days of the delivery date of any shipping damage. Customer is responsible for shipping damage outside of this time period. Approval for return must be provided by Blichmann Engineering prior to any return. Customer is responsible for keeping all original packaging material for warranty returns. Blichmann Engineering is not responsible for damage from improperly packaged warranty returns, and these repair costs will be the sole responsibility of the customer. Shipping costs for warranty returns are covered only for the contiguous United States.
5. Blichmann Engineering's limited warranty is valid in any country where the product is distributed.

B. Limitations of Warranty

1. Any implied warranty that is found to arise by way of state or federal law, including any implied warranty of merchantability or any implied warranty of fitness, is limited in duration to the terms of this limited warranty and is limited in scope of coverage to this warranty. Blichmann Engineering disclaims any express or implied warranty, including any implied warranty of fitness for a particular purpose or merchantability, on items excluded from coverage as set forth in this limited warranty.
2. Blichmann Engineering makes no warranty of any nature beyond that contained in this limited warranty. No one has authority to enlarge, amend, or modify this limited warranty, and Blichmann Engineering does not authorize anyone to create any other obligation for it regarding this product.
3. Blichmann Engineering is not responsible for any representation, promise, or warranty made by any independent dealer or other person beyond what is expressly stated in this limited warranty. Any selling or servicing dealer is not Blichmann Engineering's agent, but an independent entity.

C. Limitations of Liability

1. The remedies provided in this warranty are the customer's sole and exclusive remedies.
2. Except for the obligations specifically set forth in this warranty, in no event shall Blichmann Engineering be liable for direct, indirect, special, incidental, or consequential damages, whether based on contract, tort, or any other legal theory and whether or not advised of the possibility of such damages.
3. This warranty does not cover, and in no event shall Blichmann Engineering be liable for, travel, lodging, or any other expense incurred due to manufacturing defects in material and workmanship, or any other reason.
4. Any performance of repairs after the warranty coverage period has expired or performance of repairs regarding anything excluded from coverage after this limited warranty shall be considered good-will repairs and they will not alter the terms of this limited warranty, or extend any warranty coverage period.

D. Local Law venue for any legal proceedings relating to or arising out of this warranty shall be in Tippecanoe County, Indiana, United States, which courts

1. ~~This warranty gives the customer~~ This warranty gives the customer specific legal rights. The customer may also have other rights that vary from state to state in the United States or other countries.
2. To the extent that this warranty is inconsistent with local law, it shall be deemed modified, only to the extent necessary to be consistent with such local law.

This product uses food grade materials anywhere the product touches the beverage.

Warning: This product contains or may contain chemical(s) known to the State of California to cause cancer, birth defects, or other reproductive harm.